



NATA LIGHTING CO.,LTD.
www.nata.cn
Email:info@nata.com
Tel:+86-750-3770000 Fax:+86-750-3771111
Address:380JinOu Road,GaoXin Zone,Jiang Men City,Guangdong,China

NT

Client:

LumCAT: 1-1379-L

Luminaire: 92.70.410.00

Report No: 20231106-B010

Ballast type: AC

Test No: 20231106-C013

Voltage(V): 35.090

LampCAT: Fortimo_SLM_C_1203

Current(A): 0.246

Lamp flux(lm): 1385.0

Power (W): 8.632

Number of Lamps: 1

PF: 0.000

Length(mm): 0

Width(mm): 0

Phm Type: C

Height(mm): 0

Photometric Results

Lumens(lm): 1262.54, Efficiency(%): 91.16% , Luminous Efficacy(lm/W): 146.26

Central intensity(cd): 3109.765, Maximum intensity(cd): 3109.765

Angle of maximum intensity: C=0.0 γ =0.0

Beam Angle(50%Imax): [C0/180]Total=36.0

[C90/270]Total=36.0

Field angle(10%Imax): [C0/180]Total=59.2

[C90/270]Total=59.2

Beam angle of C0 plane : 35.99

Average BeamAngle(IEC 61341):35.99

Maximum s/h(1/2): C0_180=0.59 C90_270=0.59

Maximum s/h(1/4): C0_180=0.58 C90_270=0.58

Up flux rate of lamp(%): 0.00%

Down flux rate of lamp(%): 91.16%

Up flux rate of LUM(%): - -

Down flux rate of LUM(%): 100.00%

CIE Type : Direct lighting

Output flux ratio in π solid angle : 97.981%

Equipment: GMS1980
Temperature(°C): 0.0

Date: 2023/11/06
Humidity(%): 0.0%

Operator: NT07
Distance(m): 7.44

$\gamma(^{\circ})$	Average I(cd)	Zonal F(lm)	Sum F(lm)	Eff Flux(%)	Eff Sum(%)
0.0	3109.765	0.000	0	0.00%	0.00%
1.0	3106.167	2.974	2.974	0.21%	0.24%
2.0	3098.971	8.906	11.88	0.64%	0.94%
3.0	3081.327	14.781	26.662	1.07%	2.11%
4.0	3055.657	20.542	47.204	1.48%	3.74%
5.0	3017.048	26.124	73.329	1.89%	5.81%
6.0	2968.060	31.453	104.782	2.27%	8.30%
7.0	2907.517	36.470	141.251	2.63%	11.19%
8.0	2826.978	41.041	182.292	2.96%	14.44%
9.0	2741.595	45.130	227.422	3.26%	18.01%
10.0	2641.543	48.715	276.138	3.52%	21.87%
11.0	2536.164	51.736	327.874	3.74%	25.97%
12.0	2406.567	54.031	381.905	3.90%	30.25%
13.0	2273.096	55.536	437.441	4.01%	34.65%
14.0	2140.870	56.498	493.939	4.08%	39.12%
15.0	1992.107	56.739	550.678	4.10%	43.62%
16.0	1849.156	56.285	606.964	4.06%	48.07%
17.0	1693.820	55.174	662.137	3.98%	52.44%
18.0	1554.122	53.552	715.689	3.87%	56.69%
19.0	1341.529	50.378	766.067	3.64%	60.68%
20.0	1207.587	46.656	812.723	3.37%	64.37%
21.0	1116.503	44.627	857.35	3.22%	67.91%
22.0	1003.692	42.606	899.957	3.08%	71.28%
23.0	891.608	39.769	939.725	2.87%	74.43%
24.0	781.337	36.577	976.302	2.64%	77.33%
25.0	678.891	33.202	1009.504	2.40%	79.96%
26.0	584.160	29.814	1039.319	2.15%	82.32%
27.0	495.415	26.412	1065.731	1.91%	84.41%
28.0	420.757	23.196	1088.926	1.67%	86.25%
29.0	349.738	20.158	1109.084	1.46%	87.85%
30.0	288.724	17.238	1126.323	1.24%	89.21%
31.0	244.884	14.850	1141.172	1.07%	90.39%
32.0	207.666	12.965	1154.137	0.94%	91.41%
33.0	138.744	10.205	1164.343	0.74%	92.22%
34.0	109.074	7.500	1171.842	0.54%	92.82%
35.0	91.333	6.224	1178.066	0.45%	93.31%
36.0	78.395	5.404	1183.471	0.39%	93.74%
37.0	68.978	4.806	1188.277	0.35%	94.12%

$\gamma(^{\circ})$	Average I(cd)	Zonal F(lm)	Sum F(lm)	Eff Flux(%)	Eff Sum(%)
38.0	60.813	4.332	1192.609	0.31%	94.46%
39.0	53.845	3.914	1196.523	0.28%	94.77%
40.0	48.185	3.558	1200.081	0.26%	95.05%
41.0	42.858	3.242	1203.323	0.23%	95.31%
42.0	38.720	2.964	1206.287	0.21%	95.54%
43.0	34.624	2.717	1209.004	0.20%	95.76%
44.0	31.323	2.489	1211.493	0.18%	95.96%
45.0	28.369	2.294	1213.787	0.17%	96.14%
46.0	26.161	2.133	1215.92	0.15%	96.31%
47.0	24.190	2.003	1217.922	0.14%	96.47%
48.0	22.425	1.884	1219.807	0.14%	96.62%
49.0	20.931	1.780	1221.587	0.13%	96.76%
50.0	19.630	1.691	1223.278	0.12%	96.89%
51.0	18.509	1.614	1224.892	0.12%	97.02%
52.0	17.526	1.546	1226.438	0.11%	97.14%
53.0	16.648	1.487	1227.925	0.11%	97.26%
54.0	15.824	1.431	1229.356	0.10%	97.37%
55.0	15.118	1.381	1230.737	0.10%	97.48%
56.0	14.496	1.338	1232.075	0.10%	97.59%
57.0	13.873	1.297	1233.372	0.09%	97.69%
58.0	13.340	1.258	1234.631	0.09%	97.79%
59.0	12.842	1.224	1235.855	0.09%	97.89%
60.0	12.365	1.191	1237.046	0.09%	97.98%
61.0	11.929	1.159	1238.205	0.08%	98.07%
62.0	11.527	1.130	1239.335	0.08%	98.16%
63.0	11.154	1.103	1240.438	0.08%	98.25%
64.0	10.787	1.077	1241.515	0.08%	98.33%
65.0	10.448	1.051	1242.566	0.08%	98.42%
66.0	10.144	1.027	1243.593	0.07%	98.50%
67.0	9.846	1.005	1244.598	0.07%	98.58%
68.0	9.569	0.984	1245.582	0.07%	98.66%
69.0	9.320	0.964	1246.545	0.07%	98.73%
70.0	9.078	0.945	1247.49	0.07%	98.81%
71.0	8.801	0.924	1248.414	0.07%	98.88%
72.0	8.566	0.903	1249.317	0.07%	98.95%
73.0	8.324	0.883	1250.201	0.06%	99.02%
74.0	8.102	0.864	1251.064	0.06%	99.09%
75.0	7.867	0.844	1251.908	0.06%	99.16%

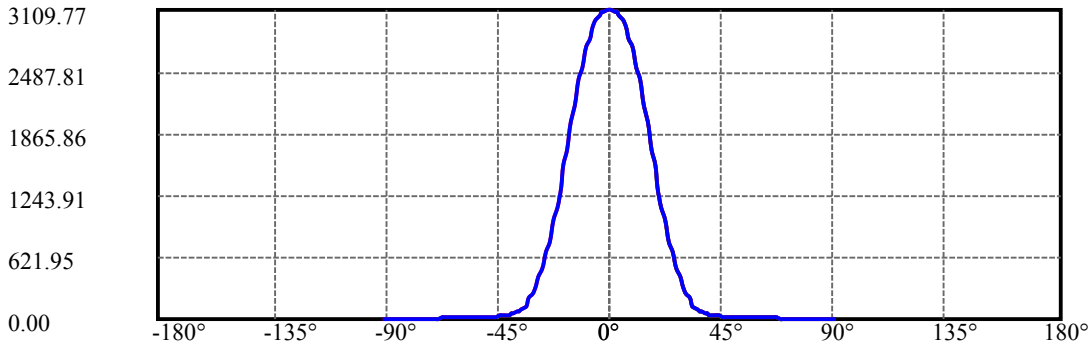
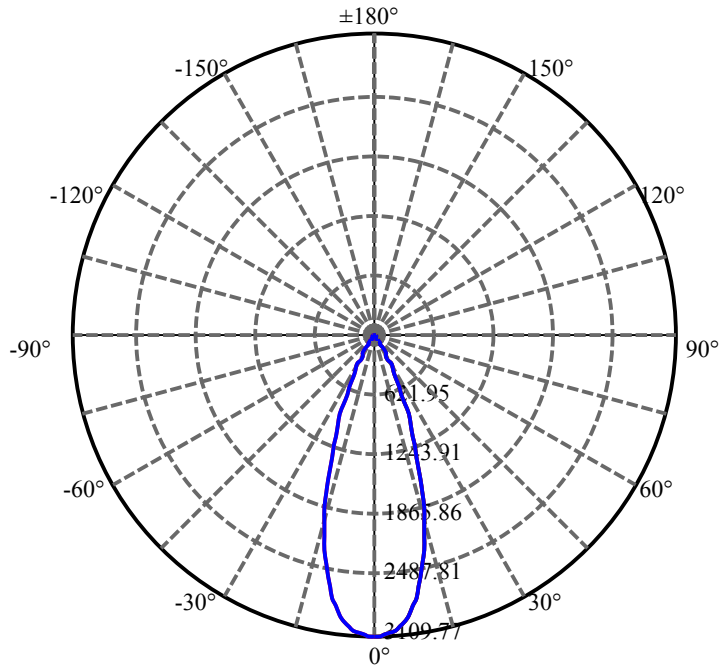
$\gamma(^{\circ})$	Average I(cd)	Zonal F(lm)	Sum F(lm)	Eff Flux(%)	Eff Sum(%)
76.0	7.646	0.823	1252.732	0.06%	99.22%
77.0	7.417	0.803	1253.535	0.06%	99.29%
78.0	7.224	0.784	1254.318	0.06%	99.35%
79.0	7.037	0.766	1255.085	0.06%	99.41%
80.0	6.864	0.749	1255.834	0.05%	99.47%
81.0	6.684	0.733	1256.567	0.05%	99.53%
82.0	6.559	0.718	1257.285	0.05%	99.58%
83.0	6.421	0.706	1257.99	0.05%	99.64%
84.0	6.262	0.691	1258.681	0.05%	99.69%
85.0	6.117	0.676	1259.357	0.05%	99.75%
86.0	5.957	0.660	1260.017	0.05%	99.80%
87.0	5.840	0.646	1260.663	0.05%	99.85%
88.0	5.743	0.634	1261.297	0.05%	99.90%
89.0	5.639	0.624	1261.921	0.05%	99.95%
90.0	5.605	0.616	1262.537	0.04%	100.00%

ZONAL LUMEN SUMMARY

Zone	Lumens	%Lamp	%Fixt
0-30	1126.32	81.32%	89.21%
0-40	1200.08	86.65%	95.05%
0-60	1237.05	89.32%	97.98%
0-90	1261.92	91.11%	99.95%
0-120	1261.92	91.11%	99.95%
0-180	1262.54	91.16%	100.00%
60-90	24.88	1.80%	1.97%
90-120	0.00	0.00%	0.00%
90-130	0.00	0.00%	0.00%
90-150	0.00	0.00%	0.00%
90-180	0.00	0.00%	0.00%
0-25.02	1010.03	72.93%	80.00%

ZONAL LUMEN SUMMARY

0-10	276.14
10-20	536.59
20-30	313.60
30-40	73.76
40-50	23.20
50-60	13.77
60-70	10.44
70-80	8.34
80-90	6.09
90-100	0.00
100-110	0.00
110-120	0.00
120-130	0.00
130-140	0.00
140-150	0.00
150-160	0.00
160-170	0.00
170-180	0.00



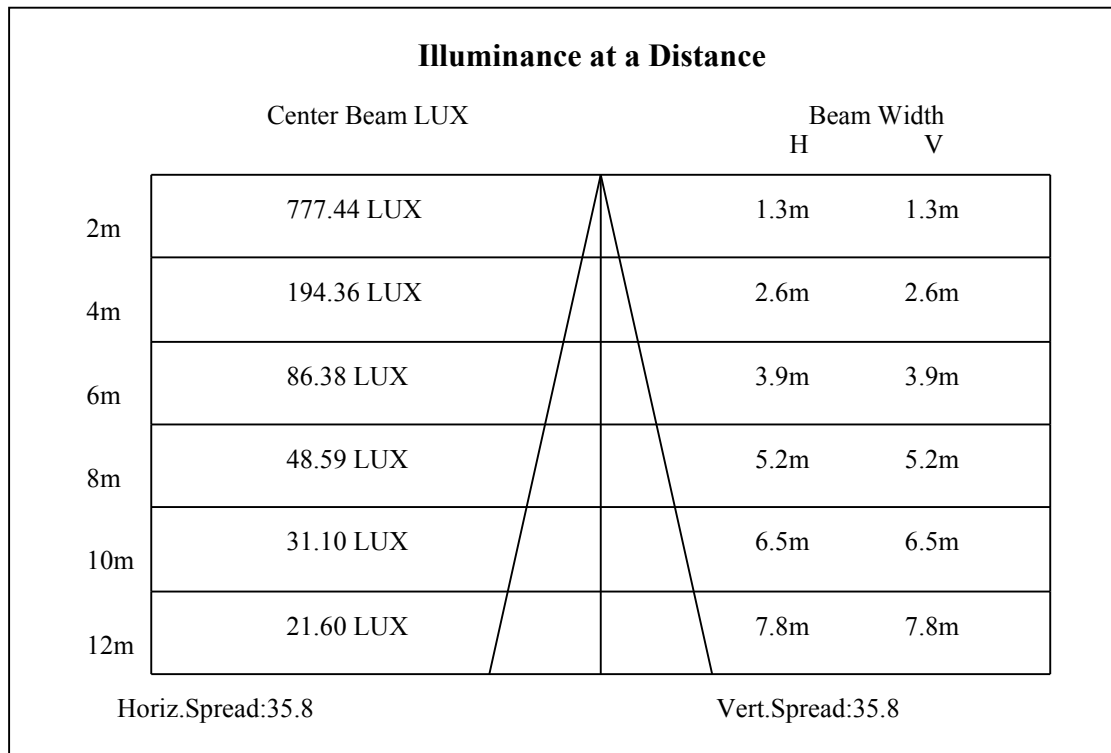
C0(Max): —————

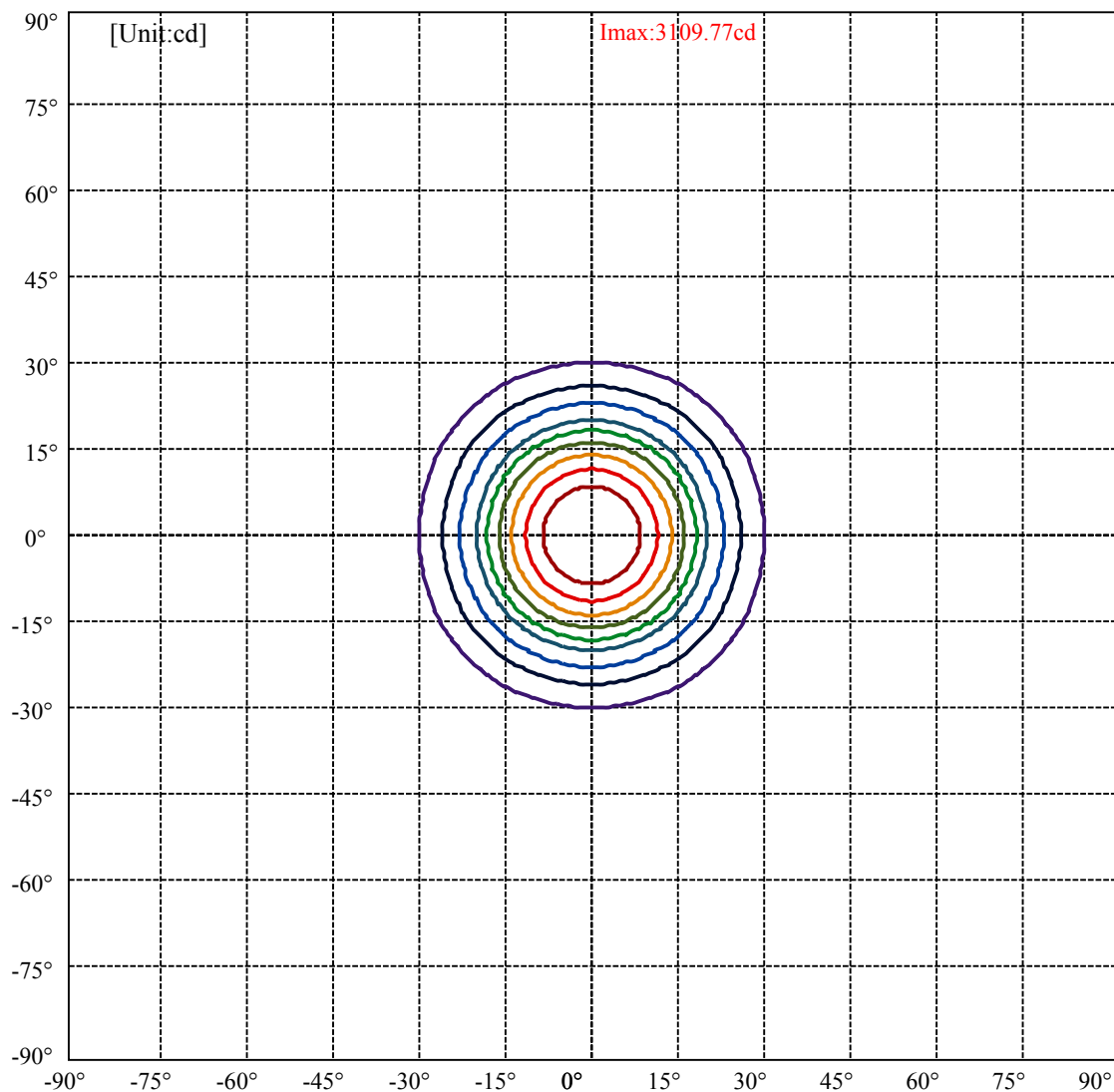
C0/C180: —————

C90/C270: —————

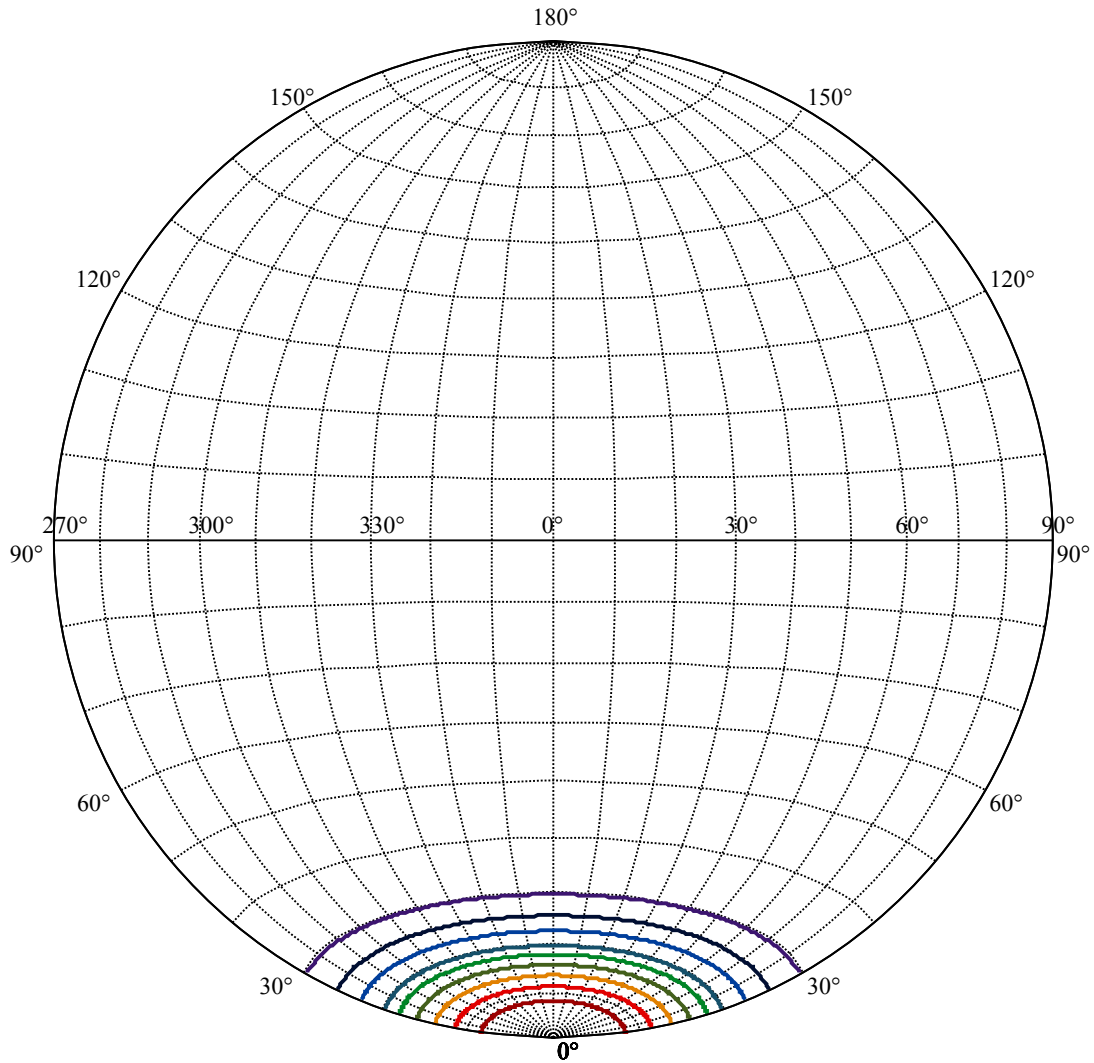
Field angle(10%Imax):C0/180Left:29.6 Right:29.6
:C90/270Left:29.6 Right:29.6

Beam Angle(50%Imax):C0/180Left:18.0 Right:18.0
:C90/270Left:18.0 Right:18.0





(10%Imax) 310.977	—
(20%Imax) 621.953	—
(30%Imax) 932.93	—
(40%Imax) 1243.91	—
(50%Imax) 1554.88	—
(60%Imax) 1865.86	—
(70%Imax) 2176.84	—
(80%Imax) 2487.81	—
(90%Imax) 2798.79	—



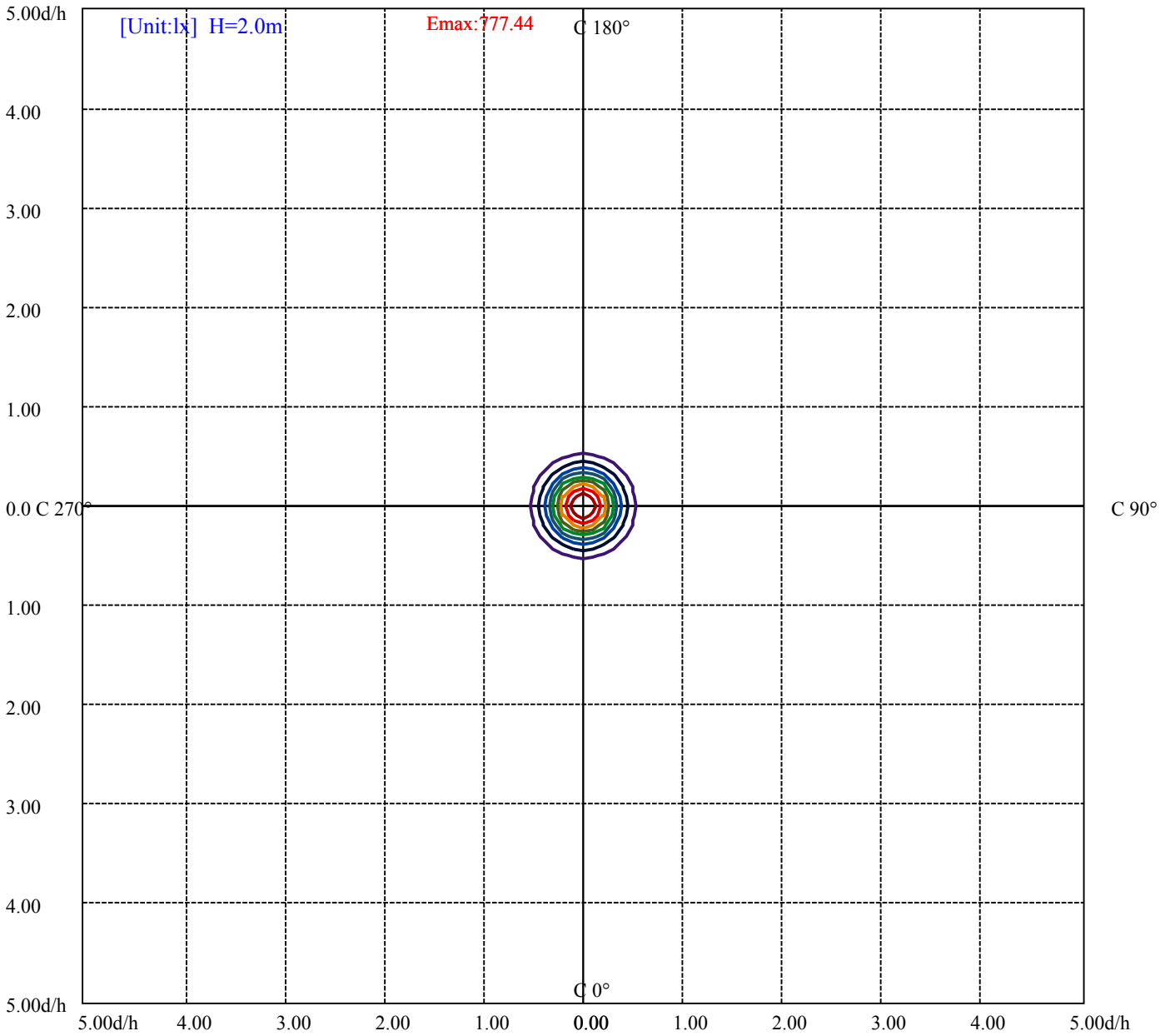
House

[Unit:cd]

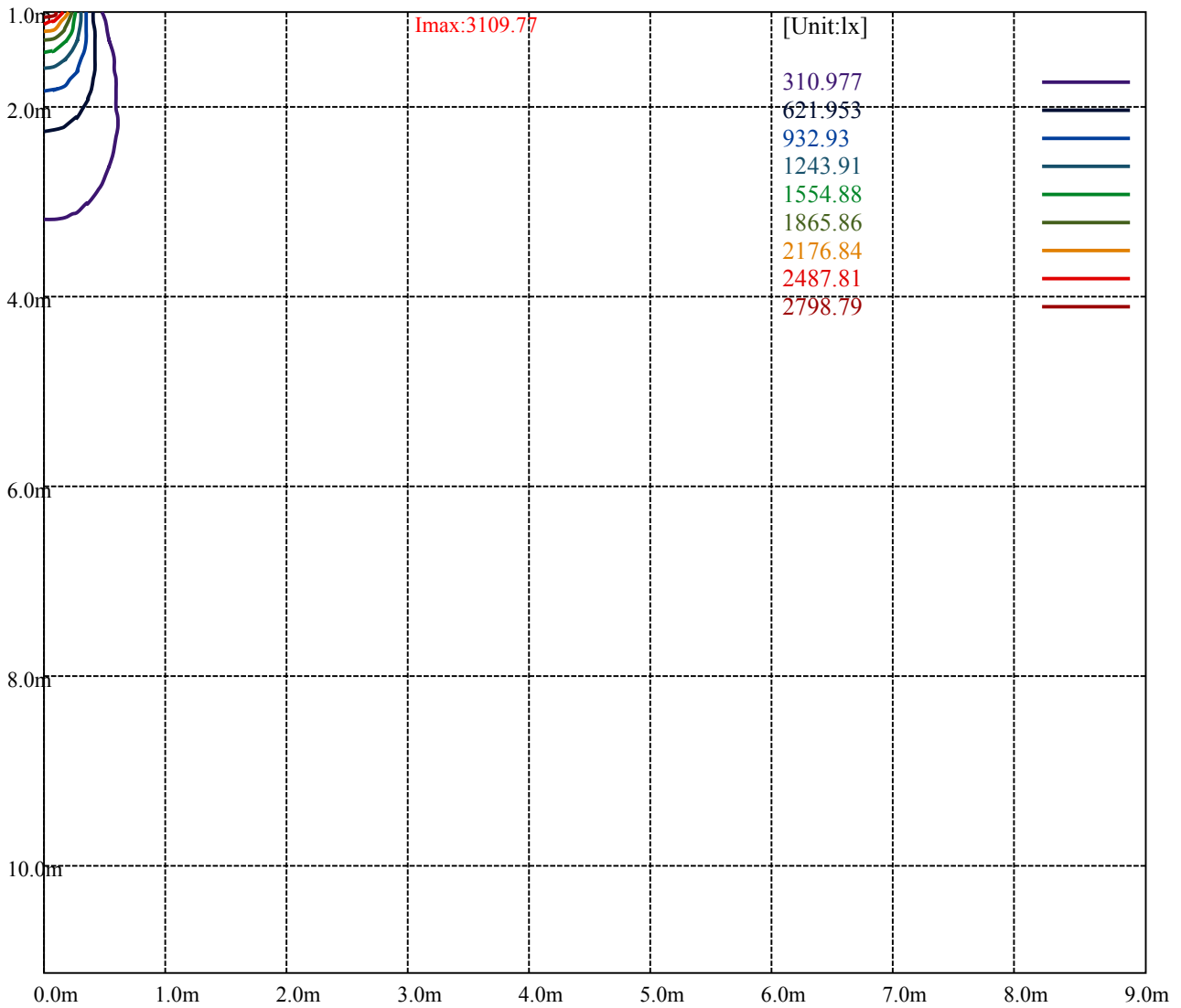
Road

Imax:3109.77

(10%Imax) 310.977	—
(20%Imax) 621.953	—
(30%Imax) 932.93	—
(40%Imax) 1243.91	—
(50%Imax) 1554.88	—
(60%Imax) 1865.86	—
(70%Imax) 2176.84	—
(80%Imax) 2487.81	—
(90%Imax) 2798.79	—



(10%Emax) 77.744	—
(20%Emax) 155.4883	—
(30%Emax) 233.2323	—
(40%Emax) 310.9775	—
(50%Emax) 388.72	—
(60%Emax) 466.465	—
(70%Emax) 544.21	—
(80%Emax) 621.9525	—
(90%Emax) 699.6975	—



Luminance Table

γ	45	50	55	60	65	70	75	80	85
C0	0	0	0	0	0	0	0	0	0
C45	0	0	0	0	0	0	0	0	0
C90	0	0	0	0	0	0	0	0	0

L(Hor)(65)	L(Ver)(65)	L45(65)	L(Hor)(75)	L(Ver)(75)	L45(75)	L(Hor)(85)	L(Ver)(85)	L45(85)
0	0	0	0	0	0	0	0	0

Glare Table

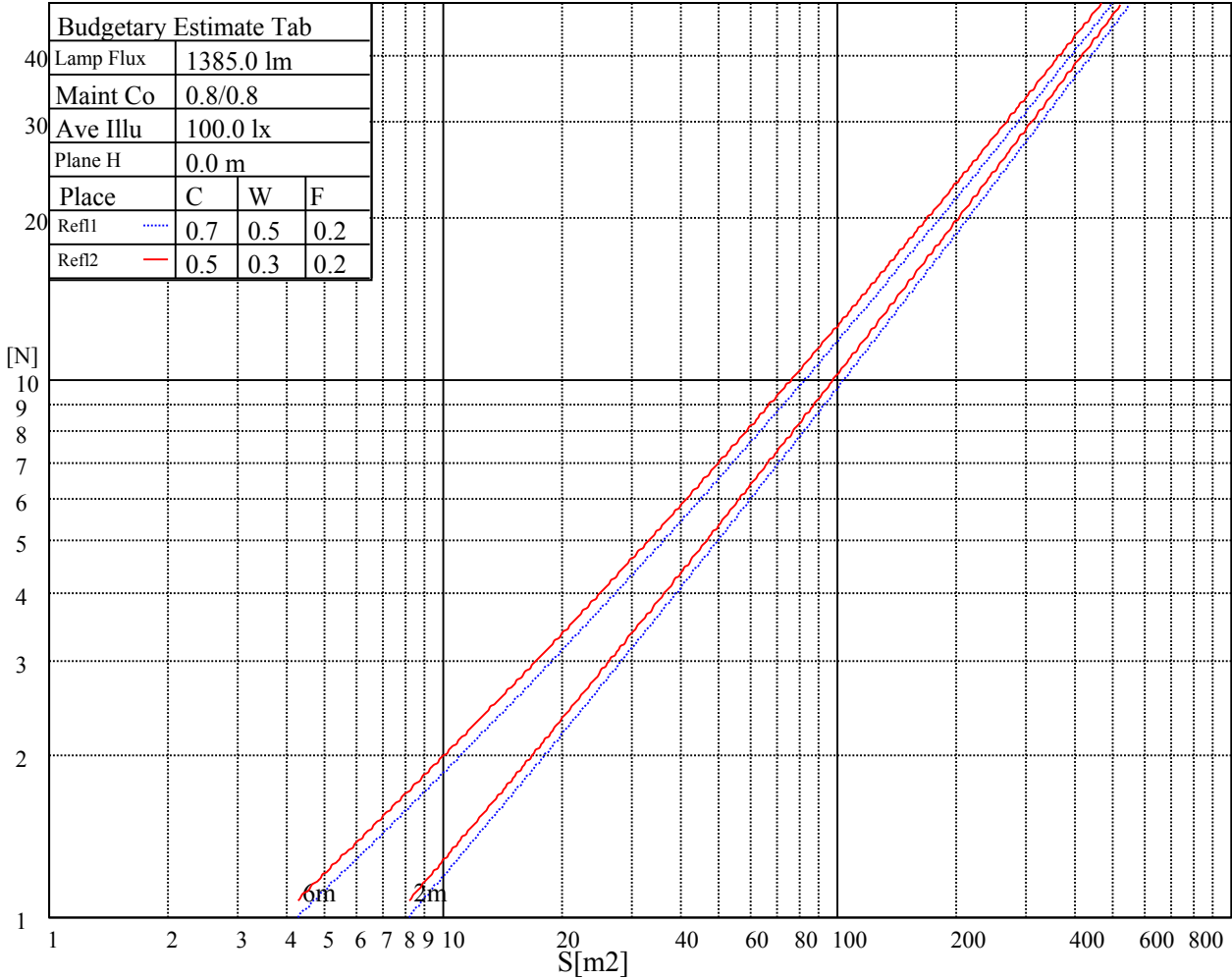
Glare	Quality	Service Values Illuminance(lx)							
1.15	A	2000	1000	500	<=300				
1.5	B		2000	1000	500	<=300			
1.85	C			2000	1000	500	<=300		
2.2	D				2000	1000	500	<=300	
2.55	E					2000	1000	500	<=300
		a	b	c	d	e	f	g	h

Luminance Limiting Curve

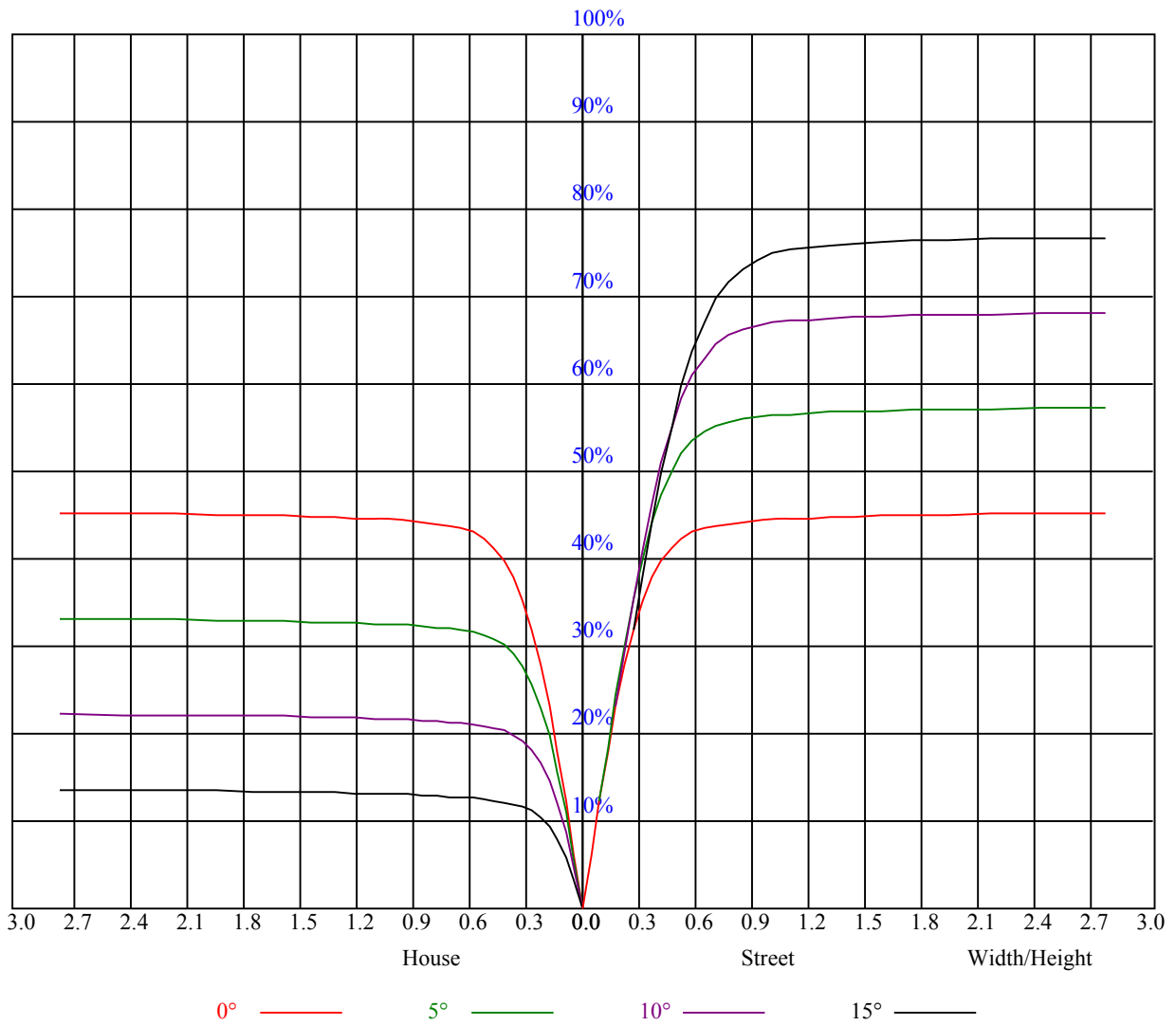


Illumination assessment according UGR											
Rf of Ceiling	70	70	50	50	30	70	70	50	50	30	
Rf of Wall	50	30	50	30	30	50	30	50	30	30	
Rf of Floor	20	20	20	20	20	20	20	20	20	20	
Room dimensions		Viewed crosswise					Viewed endwise				
X	Y										
2H	2H	非数字	非数字	非数字	非数字	非数字	非数字	非数字	非数字	非数字	
	3H	非数字	非数字	非数字	非数字	非数字	非数字	非数字	非数字	非数字	
	4H	非数字	非数字	非数字	非数字	非数字	非数字	非数字	非数字	非数字	
	6H	非数字	非数字	非数字	非数字	非数字	非数字	非数字	非数字	非数字	
	8H	非数字	非数字	非数字	非数字	非数字	非数字	非数字	非数字	非数字	
4H	12H	非数字	非数字	非数字	非数字	非数字	非数字	非数字	非数字	非数字	
	2H	非数字	非数字	非数字	非数字	非数字	非数字	非数字	非数字	非数字	
	3H	非数字	非数字	非数字	非数字	非数字	非数字	非数字	非数字	非数字	
	4H	非数字	非数字	非数字	非数字	非数字	非数字	非数字	非数字	非数字	
	6H	非数字	非数字	非数字	非数字	非数字	非数字	非数字	非数字	非数字	
8H	8H	非数字	非数字	非数字	非数字	非数字	非数字	非数字	非数字	非数字	
	12H	非数字	非数字	非数字	非数字	非数字	非数字	非数字	非数字	非数字	
	4H	非数字	非数字	非数字	非数字	非数字	非数字	非数字	非数字	非数字	
	6H	非数字	非数字	非数字	非数字	非数字	非数字	非数字	非数字	非数字	
	8H	非数字	非数字	非数字	非数字	非数字	非数字	非数字	非数字	非数字	
12H	12H	非数字	非数字	非数字	非数字	非数字	非数字	非数字	非数字	非数字	
	4H	非数字	非数字	非数字	非数字	非数字	非数字	非数字	非数字	非数字	
	6H	非数字	非数字	非数字	非数字	非数字	非数字	非数字	非数字	非数字	
	8H	非数字	非数字	非数字	非数字	非数字	非数字	非数字	非数字	非数字	
Variation with the observer position at spacings:											
S = 1.0H		非数字/非数字					非数字/非数字				
S = 1.5H		非数字/非数字					非数字/非数字				
S = 2.0H		非数字/非数字					非数字/非数字				
Standard tables:		BK0					BK0				
Uncorrected UGR		负无穷大					负无穷大				

UGR calculation is based on CIE Publ. 117 ,S/H = 0.25



RHOCC	80			70			50			30			10			0
RHOW	50	30	10	50	30	10	50	30	10	50	30	10	50	30	10	0
RCR	COEFFICIENTS OF UTILIZATION RHOFC=20 CU															
0	1.09	1.09	1.09	1.06	1.06	1.06	1.01	1.01	1.01	0.97	0.97	0.97	0.93	0.93	0.93	0.91
1	1.02	1.00	0.98	1.00	0.98	0.96	0.96	0.95	0.93	0.93	0.92	0.90	0.90	0.89	0.88	0.86
2	0.96	0.93	0.90	0.94	0.91	0.89	0.91	0.89	0.87	0.89	0.87	0.85	0.86	0.85	0.83	0.82
3	0.91	0.87	0.84	0.90	0.86	0.83	0.87	0.84	0.82	0.85	0.83	0.80	0.83	0.81	0.79	0.78
4	0.86	0.82	0.79	0.85	0.81	0.78	0.83	0.80	0.77	0.82	0.79	0.76	0.80	0.78	0.76	0.74
5	0.82	0.78	0.74	0.81	0.77	0.74	0.80	0.76	0.74	0.78	0.75	0.73	0.77	0.74	0.72	0.71
6	0.79	0.74	0.71	0.78	0.74	0.71	0.77	0.73	0.70	0.75	0.72	0.70	0.74	0.71	0.69	0.68
7	0.75	0.71	0.68	0.75	0.70	0.67	0.74	0.70	0.67	0.73	0.69	0.67	0.72	0.69	0.66	0.65
8	0.72	0.68	0.65	0.72	0.68	0.65	0.71	0.67	0.64	0.70	0.67	0.64	0.69	0.66	0.64	0.63
9	0.69	0.65	0.62	0.69	0.65	0.62	0.68	0.64	0.62	0.68	0.64	0.62	0.67	0.64	0.61	0.60
10	0.67	0.63	0.60	0.67	0.62	0.60	0.66	0.62	0.59	0.65	0.62	0.59	0.65	0.61	0.59	0.58



Intensity data(cd)

C/γ(°)	0.0	1.0	2.0	3.0	4.0	5.0	6.0	7.0	8.0
0.0	3113.64	3106.44	3091.50	3061.61	3018.43	2973.60	2917.13	2856.80	2758.82
45.0	3108.66	3108.66	3095.93	3083.75	3063.82	3015.66	2965.85	2913.81	2830.23
90.0	3108.10	3087.07	3064.93	3026.73	2992.97	2958.65	2884.48	2818.05	2735.02
135.0	3108.66	3099.80	3093.16	3073.79	3048.32	3014.56	2970.83	2893.33	2819.16
180.0	3113.64	3113.09	3111.43	3104.23	3087.07	3053.86	3020.65	2953.11	2884.48
225.0	3108.66	3114.19	3108.10	3085.96	3063.82	3012.90	2961.97	2897.76	2816.94
270.0	3108.10	3108.66	3115.85	3116.41	3096.48	3069.91	3029.50	2986.33	2917.13
315.0	3108.66	3111.43	3110.87	3098.14	3074.34	3037.25	2994.08	2940.94	2854.03
360.0	3113.64	3106.44	3091.50	3061.61	3018.43	2973.60	2917.13	2856.80	2758.82
C/γ(°)	9.0	10.0	11.0	12.0	13.0	14.0	15.0	16.0	17.0
0.0	2673.58	2552.91	2439.99	2320.42	2156.02	2023.73	1886.45	1744.19	1574.26
45.0	2745.54	2660.85	2567.30	2431.68	2315.44	2191.45	2065.80	1895.86	1752.49
90.0	2648.12	2520.80	2406.77	2292.75	2163.22	2002.14	1865.42	1724.26	1557.65
135.0	2719.52	2623.21	2521.36	2369.13	2241.82	2109.53	1942.36	1802.31	1666.14
180.0	2808.09	2702.92	2606.60	2491.47	2337.58	2211.93	2082.40	1940.14	1762.46
225.0	2706.79	2601.62	2492.57	2335.37	2201.41	2074.65	1909.15	1773.53	1635.15
270.0	2855.14	2781.52	2688.52	2552.91	2432.24	2307.14	2141.63	2003.80	1828.88
315.0	2775.98	2688.52	2566.19	2458.81	2337.03	2206.39	2043.65	1909.15	1773.53
360.0	2673.58	2552.91	2439.99	2320.42	2156.02	2023.73	1886.45	1744.19	1574.26
C/γ(°)	18.0	19.0	20.0	21.0	22.0	23.0	24.0	25.0	26.0
0.0	1434.77	1081.94	1081.94	1023.60	918.70	816.41	693.69	606.18	523.53
45.0	1619.09	1447.50	1315.76	1187.33	1041.75	936.03	836.39	714.06	621.07
90.0	1425.36	1103.70	1103.70	1018.45	913.72	789.67	692.97	603.58	521.87
135.0	1531.08	1363.36	1232.72	1110.95	997.47	867.94	767.20	669.78	560.18
180.0	1631.27	1498.42	1359.48	1192.32	1076.63	969.24	844.70	748.38	643.21
225.0	1465.21	1236.60	1079.23	1079.23	943.23	842.81	743.73	651.24	546.17
270.0	1694.37	1550.45	1401.00	1233.28	1110.39	996.36	860.19	750.59	662.03
315.0	1631.82	1450.26	1086.87	1086.87	1027.64	914.39	811.82	687.33	595.22
360.0	1434.77	1081.94	1081.94	1023.60	918.70	816.41	693.69	606.18	523.53
C/γ(°)	27.0	28.0	29.0	30.0	31.0	32.0	33.0	34.0	35.0
0.0	430.10	365.33	304.17	236.19	188.09	147.13	115.14	89.45	78.21
45.0	537.48	461.65	378.62	318.84	290.61	290.61	152.33	119.01	95.93
90.0	425.61	358.25	297.08	240.95	181.23	141.71	112.15	88.07	77.05
135.0	479.92	409.62	329.35	286.18	286.18	170.38	128.53	106.00	90.95
180.0	560.73	485.45	418.47	340.42	293.37	293.37	179.79	135.01	110.38
225.0	470.28	401.42	322.55	263.98	199.61	158.26	127.81	106.28	89.34
270.0	570.14	469.40	399.10	336.00	288.39	288.39	160.80	122.66	101.68
315.0	489.05	414.93	348.56	287.23	231.60	171.49	133.40	106.11	87.13
360.0	430.10	365.33	304.17	236.19	188.09	147.13	115.14	89.45	78.21
C/γ(°)	36.0	37.0	38.0	39.0	40.0	41.0	42.0	43.0	44.0
0.0	69.75	62.38	54.41	48.99	44.28	39.41	35.92	31.77	28.95
45.0	78.55	69.80	62.00	53.80	48.05	43.23	38.30	34.87	31.77
90.0	66.09	58.79	52.42	45.56	41.02	37.09	33.82	30.56	27.34
135.0	77.22	68.03	60.61	54.30	47.71	43.34	39.41	34.93	31.94
180.0	95.65	82.09	70.30	62.27	55.58	48.27	43.34	38.08	34.43
225.0	78.21	69.19	61.72	53.53	47.88	43.01	38.80	34.10	31.05
270.0	88.18	75.78	67.70	60.67	54.52	47.66	43.01	38.97	35.26
315.0	73.51	65.76	57.35	51.64	46.44	40.85	37.14	33.71	29.84
360.0	69.75	62.38	54.41	48.99	44.28	39.41	35.92	31.77	28.95

Intensity data(cd)

C/γ(°)	45.0	46.0	47.0	48.0	49.0	50.0	51.0	52.0	53.0
0.0	26.68	24.24	22.69	21.20	19.93	18.65	17.66	16.83	16.05
45.0	28.17	25.91	24.02	22.42	20.59	19.32	18.27	17.16	16.38
90.0	25.24	23.53	21.59	20.20	19.10	17.88	17.05	16.27	15.39
135.0	28.95	26.85	24.91	23.30	21.53	20.31	19.21	18.27	17.21
180.0	31.44	28.95	26.24	24.41	22.81	21.42	19.87	18.76	17.77
225.0	27.84	25.74	23.91	21.98	20.54	19.37	18.10	17.16	16.38
270.0	31.33	28.84	26.68	24.36	22.75	21.03	19.87	18.82	17.82
315.0	27.29	25.24	23.47	21.53	20.20	19.04	18.05	16.94	16.16
360.0	26.68	24.24	22.69	21.20	19.93	18.65	17.66	16.83	16.05
C/γ(°)	54.0	55.0	56.0	57.0	58.0	59.0	60.0	61.0	62.0
0.0	15.22	14.61	14.06	13.45	12.95	12.57	12.07	11.68	11.35
45.0	15.61	14.83	14.28	13.73	13.12	12.68	12.23	11.85	11.40
90.0	14.78	14.23	13.56	13.06	12.68	12.23	11.73	11.40	11.07
135.0	16.44	15.78	15.11	14.39	13.84	13.34	12.73	12.29	11.79
180.0	16.72	16.00	15.28	14.50	13.95	13.28	12.73	12.29	11.90
225.0	15.61	14.83	14.23	13.67	13.17	12.62	12.18	11.73	11.29
270.0	16.77	16.05	15.39	14.78	14.06	13.51	13.06	12.51	12.07
315.0	15.44	14.61	14.06	13.40	12.95	12.51	12.18	11.68	11.35
360.0	15.22	14.61	14.06	13.45	12.95	12.57	12.07	11.68	11.35
C/γ(°)	63.0	64.0	65.0	66.0	67.0	68.0	69.0	70.0	71.0
0.0	10.96	10.63	10.41	10.07	9.74	9.52	9.30	9.08	8.80
45.0	11.07	10.74	10.46	10.13	9.91	9.63	9.35	9.13	8.86
90.0	10.74	10.41	10.07	9.80	9.52	9.24	8.97	8.80	8.52
135.0	11.40	11.07	10.63	10.30	10.02	9.74	9.47	9.19	8.91
180.0	11.40	11.07	10.63	10.35	9.96	9.69	9.47	9.19	8.91
225.0	10.96	10.52	10.24	9.96	9.69	9.30	9.08	8.86	8.58
270.0	11.68	11.18	10.85	10.46	10.13	9.85	9.63	9.30	9.02
315.0	11.02	10.68	10.30	10.07	9.80	9.58	9.30	9.08	8.80
360.0	10.96	10.63	10.41	10.07	9.74	9.52	9.30	9.08	8.80
C/γ(°)	72.0	73.0	74.0	75.0	76.0	77.0	78.0	79.0	80.0
0.0	8.58	8.36	8.08	7.92	7.64	7.47	7.25	7.03	6.81
45.0	8.69	8.47	8.30	8.03	7.86	7.58	7.42	7.20	7.03
90.0	8.30	8.08	7.86	7.64	7.42	7.25	7.09	6.92	6.75
135.0	8.69	8.36	8.14	7.86	7.64	7.42	7.25	7.03	6.86
180.0	8.58	8.30	8.08	7.86	7.58	7.31	7.14	7.03	6.81
225.0	8.30	8.08	7.92	7.69	7.42	7.20	7.03	6.81	6.70
270.0	8.80	8.58	8.30	8.03	7.86	7.58	7.36	7.20	7.03
315.0	8.58	8.36	8.14	7.92	7.75	7.53	7.25	7.09	6.92
360.0	8.58	8.36	8.08	7.92	7.64	7.47	7.25	7.03	6.81
C/γ(°)	81.0	82.0	83.0	84.0	85.0	86.0	87.0	88.0	89.0
0.0	6.64	6.53	6.37	6.20	6.03	5.92	5.76	5.76	5.59
45.0	6.81	6.64	6.48	6.31	6.20	5.98	5.87	5.76	5.70
90.0	6.64	6.48	6.31	6.14	5.98	5.87	5.81	5.70	5.48
135.0	6.64	6.59	6.42	6.25	6.09	5.92	5.87	5.70	5.59
180.0	6.64	6.48	6.42	6.31	6.14	5.98	5.81	5.70	5.65
225.0	6.53	6.48	6.31	6.14	6.03	5.81	5.76	5.65	5.65
270.0	6.81	6.70	6.59	6.42	6.25	6.09	5.92	5.87	5.70
315.0	6.75	6.59	6.48	6.31	6.20	6.09	5.92	5.81	5.76
360.0	6.64	6.53	6.37	6.20	6.03	5.92	5.76	5.76	5.59

Intensity data(cd)

C/γ(°)	90.0
0.0	5.54
45.0	5.59
90.0	5.48
135.0	5.70
180.0	5.76
225.0	5.70
270.0	5.48
315.0	5.59
360.0	5.54